

2019 State Indicators and Rating for Stepstone Academy

IRN: 013148	District: Stepstone Academy
School Type: Elementary School	County: Cuyahoga
Address: 3328 Carnegie Ave Cleveland, OH 44115-2747	ITC: MEC

State Test Results

# Students Took Test	# At Least Proficient	% Proficient	State Standard	State Indicator Met?
-------------------------	--------------------------	-----------------	-------------------	-------------------------

No data returned for this view. This might be because the applied filter excludes all data.

[Analyze...](#)

CHRONIC ABSENTEEISM
INDICATOR



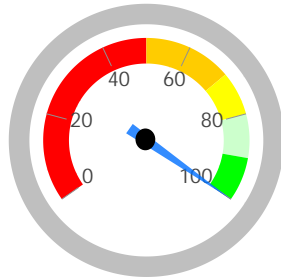
GIFTED INDICATOR

NC

[Analyze...](#)

1 indicators met of a possible 1

100.0%



A = 90.0 - 100.0%
 B = 80.0 - 89.9%
 C = 70.0 - 79.9%
 D = 50.0 - 69.9%
 F = 0.0 - 49.9%

GRADE

A

Performance Index

	Test Count by Level	Count of All Tests	Pct	Weight	Points
Untested	/	x 100 =		x 0.0 =	0.0
Limited	/	x 100 =		x 0.3 =	
Basic	/	x 100 =		x 0.6 =	
Proficient	/	x 100 =		x 1.0 =	
Accelerated	/	x 100 =		x 1.1 =	
Advanced	/	x 100 =		x 1.2 =	
Advanced Plus	/	x 100 =		x 1.3 =	

[Analyze...](#)

No data returned for this view.
This might be because the applied filter excludes all data.

points of a possible
120.0

%

A = 90.0 - 100.0%
B = 80.0 - 89.9%
C = 70.0 - 79.9%
D = 50.0 - 69.9%
F = 0.0 - 49.9%

GRADE

Component Grade

Indicators Met contributes 25% to the Achievement Component Grade, while Performance Index Score contributes 75% of the Achievement Component Grade. If a school has only one measure, then that one graded measure is used for the component. If neither measure is graded, then the component also is not graded.

Indicators Percent to Points

Grade	Percentage	Points
A	97.5% - 100.0%	5
	95.0% - 97.4%	4.75
	92.5% - 94.9%	4.5
	90.0% - 92.4%	4.25
B	87.5% - 89.9%	4
	85.0% - 87.4%	3.75
	82.5% - 84.9%	3.5
	80.0% - 82.4%	3.25
C	77.5% - 79.9%	3
	75.0% - 77.4%	2.75
	72.5% - 74.9%	2.5
	70.0% - 72.4%	2.25
D	65.0% - 69.9%	2
	60.0% - 64.9%	1.75
	55.0% - 59.9%	1.5
	50.0% - 54.9%	1.25
F	37.5% - 49.9%	1
	25.0% - 37.4%	0.75
	12.5% - 24.9%	0.5
	0.0% - 12.4%	0

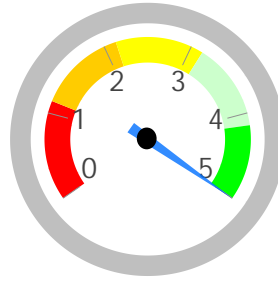
Performance Index Percent to Points

Grade	Percentage	Points
A	95.0% - 100.0%	5
	92.5% - 94.9%	4.75
	91.0% - 92.5%	4.5
	90.0% - 90.9%	4.25
B	87.5% - 89.9%	4
	85.0% - 87.4%	3.75
	82.5% - 84.9%	3.5
	80.0% - 82.4%	3.25
C	77.5% - 79.9%	3
	75.0% - 77.4%	2.75
	72.5% - 74.9%	2.5
	70.0% - 72.4%	2.25
D	65.0% - 69.9%	2
	60.0% - 64.9%	1.75
	55.0% - 59.9%	1.5
	50.0% - 54.9%	1.25
F	40.0% - 49.9%	1
	30.0% - 39.9%	0.75
	15.0% - 29.9%	0.5
	0.0% - 15.0%	0

Indicator Weighted Points: $5.00 \times \frac{100}{\%} = 5.000$

Performance Index Weighted Points: $\quad \times 0\% =$

District Achievement
Grade Points: 5.000



GRADE
A

- A = 4.125 - 5.000
- B = 3.125 - 4.124
- C = 2.125 - 3.124
- D = 1.125 - 2.124
- F = 0.000 - 1.124

[Click here](#) to see the Secure Data Center - Status of Reports report