

2019 K-3 Literacy Data for Stepstone Academy

IRN: 013148

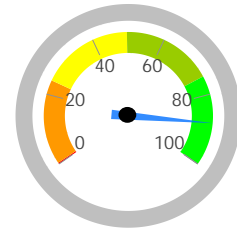
Not On-Track at Point A		Improving to On-Track at Point B	
Kindergarten Reading Diagnostic, School Year 2017 - 2018	13	to	1st Grade Reading Diagnostic, School Year 2018 - 2019
1st Grade Reading Diagnostic, School Year 2017 - 2018	12	to	2nd Grade Reading Diagnostic, School Year 2018 - 2019
2nd Grade Reading Diagnostic, School Year 2017 - 2018	0	to	3rd Grade Reading Diagnostic, School Year 2018 - 2019
3rd Grade Reading Diagnostic, School Year 2018 - 2019	0	to	3rd Grade Reading OST, School Year 2018 - 2019
Deduction for 3rd graders who did not pass OST and were not on a Reading Improvement and Monitoring Plan		0	
Totals	25		22

[Analyze...](#)

GRADE

A

K-3 Literacy

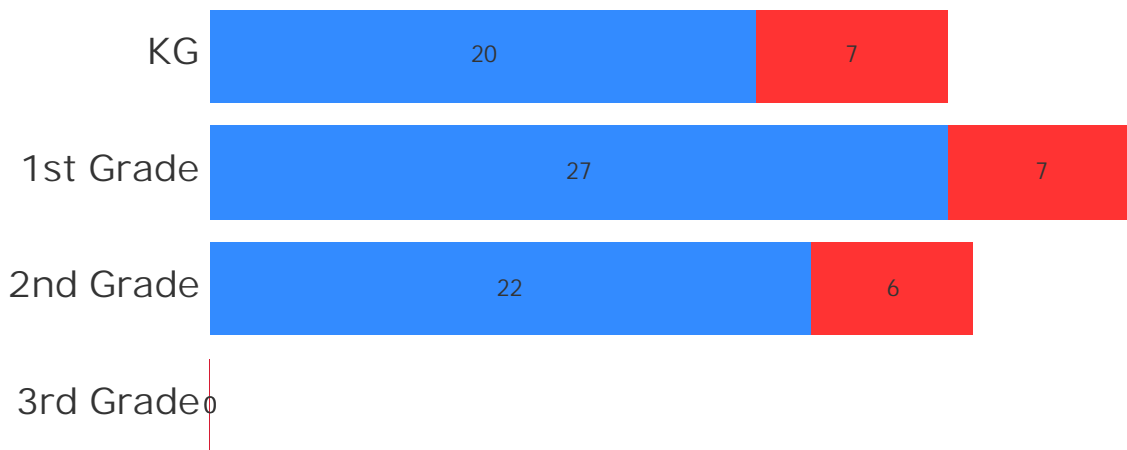


88.0%
22 out of 25

A = 78.0% - 100%
B = 55.9% - 77.9%
C = 33.8% - 55.8%
D = 11.7% - 33.7%
F = <= 11.6%

Students On-Track in Reading Diagnostic

This chart shows the overall number of students that were on-track/not-on-track for each grade level reading diagnostic in 2018-2019.



■ On-Track ■ Not On-Track

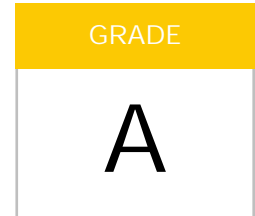
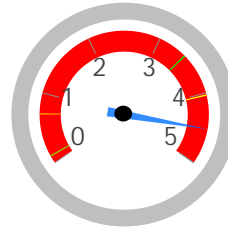
K3 Literacy Component Grade

The K-3 Literacy measure contributes 100% to the K-3 Literacy Component Grade. If a district has no K-3 Literacy measure grade, then there is no K-3 Literacy component grade.

K-3 Literacy Percent to Points (2018 Average)

Grade	Percentage	Points
A	94.50% - 100.00%	5
	89.00% - 94.49%	4.75
	83.50% - 88.99%	4.5
	78.00% - 83.49%	4.25
B	72.40% - 77.99%	4
	66.90% - 72.39%	3.75
	61.40% - 66.89%	3.5
	55.90% - 61.39%	3.25
C	50.30% - 55.89%	3
	44.80% - 50.29%	2.75
	39.30% - 44.79%	2.5
	33.80% - 39.29%	2.25
D	28.20% - 33.79%	2
	22.70% - 28.19%	1.75
	17.20% - 22.69%	1.5
	11.70% - 17.19%	1.25
F	8.70% - 11.69%	1
	5.80% - 8.69%	0.75
	2.90% - 5.79%	0.5
	<2.9%	0

Although not needed to calculate the K-3 Literacy grade, points will be assigned to the K-3 Literacy measure in 2018 as part of determining an Overall Report Card grade. The points table is included here for reference, but is part of no calculation this school year.



Grade Scale:

- A = 4.125 - 5.000
- B = 3.125 - 4.124
- C = 2.125 - 3.124
- D = 1.125 - 2.124
- F = 0.000 - 1.124

Because the K-3 Literacy component consists only of one grade, the K-3 Literacy component grade is the same as the measure grade.

[Click here](#) to see the Secure Data Center - Status of Reports report